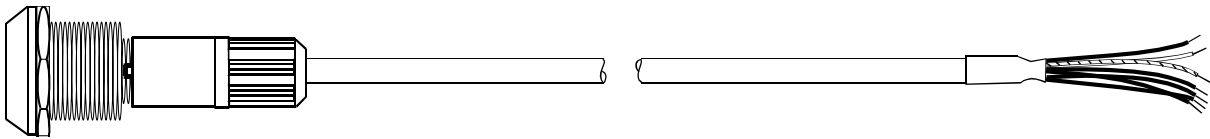


**Installation Guide**

**X11P Panel Mount Connector Assembly (40998G-05)**

for use with the

**David Clark X11P ENC headset**



## Pre- Installation Considerations

### *Location*

Install the X11P Panel Mount Connector Assembly in a convenient location such that the cable will reach the aircraft audio and power wiring points you will be using. Avoid running the cable near wiring or equipment that is likely to radiate strong electromagnetic fields.

### *Connections*

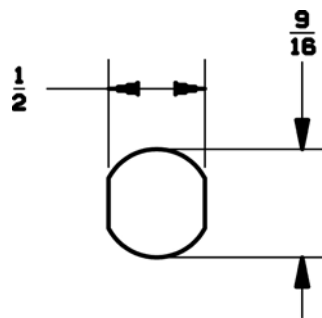
The preferred method is to wire the X11P Panel Mount Connector Assembly directly to unused microphone/speaker terminals on your audio panel.

Alternatively, you may wire the X11P Panel Mount Connector Assembly directly in parallel with existing jacks on the aircraft. However, you must not use these jacks at the same time as the XP11 Headset. Doing so may cause microphone problems.

## Mounting

A **9/16"** hole must be drilled in the aircraft's panel in order to mount the X11P Connector. If you have the equipment to drill a "double-D" hole, please see **Figure 1** below. This type of hole is not required, but will prevent rotation of the connector once installed in the panel. If necessary, Vibratite adhesive (VTCS) may be used to secure the connector and prevent rotation.

NOTE: Use of other adhesives may damage the connector.



**Figure 1: Double-D Mounting Hole**

## Wiring

### Wiring Chart

Wire Color	Function	Additional Info
Yellow	Right Earphone Audio (+)	Connect Yellow & Green together if using a monaural intercom.
Green	Left Earphone Audio (+)	Connect Yellow & Green together if using a monaural intercom.
Black	Ground (-)	Connect to Power Ground only.
Shield	Shield for audio signals	Connect with Black Wire.
Red	Microphone (+)	Connect to Microphone (+) terminal.
White	Mircophone Return (-)	Connect to Microphone (-) terminal.
Blue	Power Source (+) 11-30 VDC	Use dedicated 1A breaker or fuse

**Table1: Wiring Chart**

### Wiring Notes

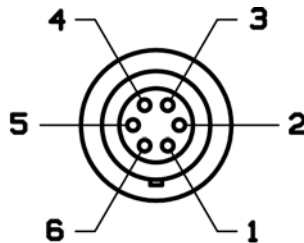
Connect the Yellow and Green wires to the Left and Right earphone/audio (+) terminals, respectively. If intercom is monaural, connect the Yellow and Green wires together, then to the earphone/audio (+) terminal.

Connect the Black wire to Power Ground. If a separate terminal exists for Audio Return, connect Black wire to Power Ground only. Connect the Shield with the Black wire.

Connect the Red and White wires to Microphone (+) and Microphone (-), respectively.

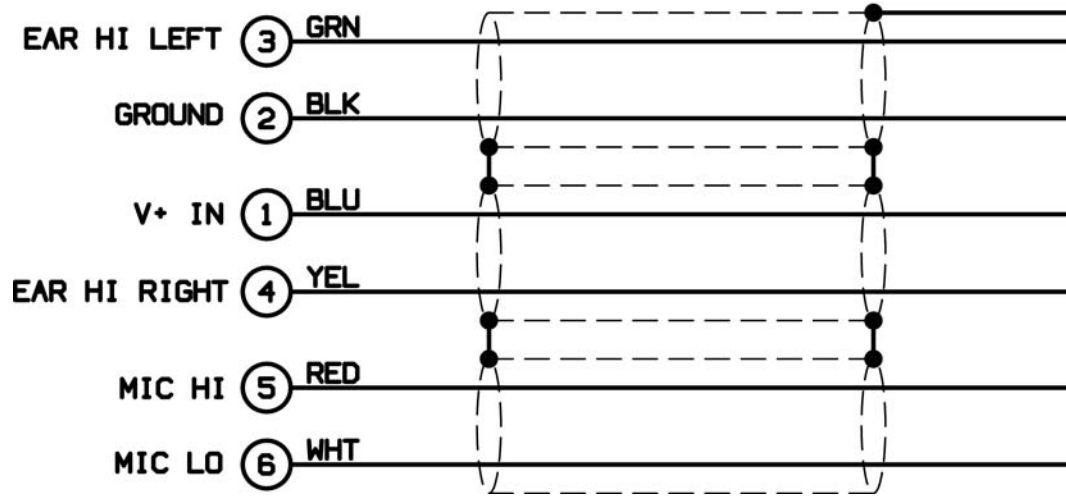
Connect the Blue wire to a clean power source (11-30VDC) and use a dedicated 1 amp circuit-breaker or fuse.

### Connector Pinout



**Figure 2: Connector Pinout, Pin View.**

*Schematic Diagram*



**Figure 3: X11P Panel Mount Connector Assembly Schematic**